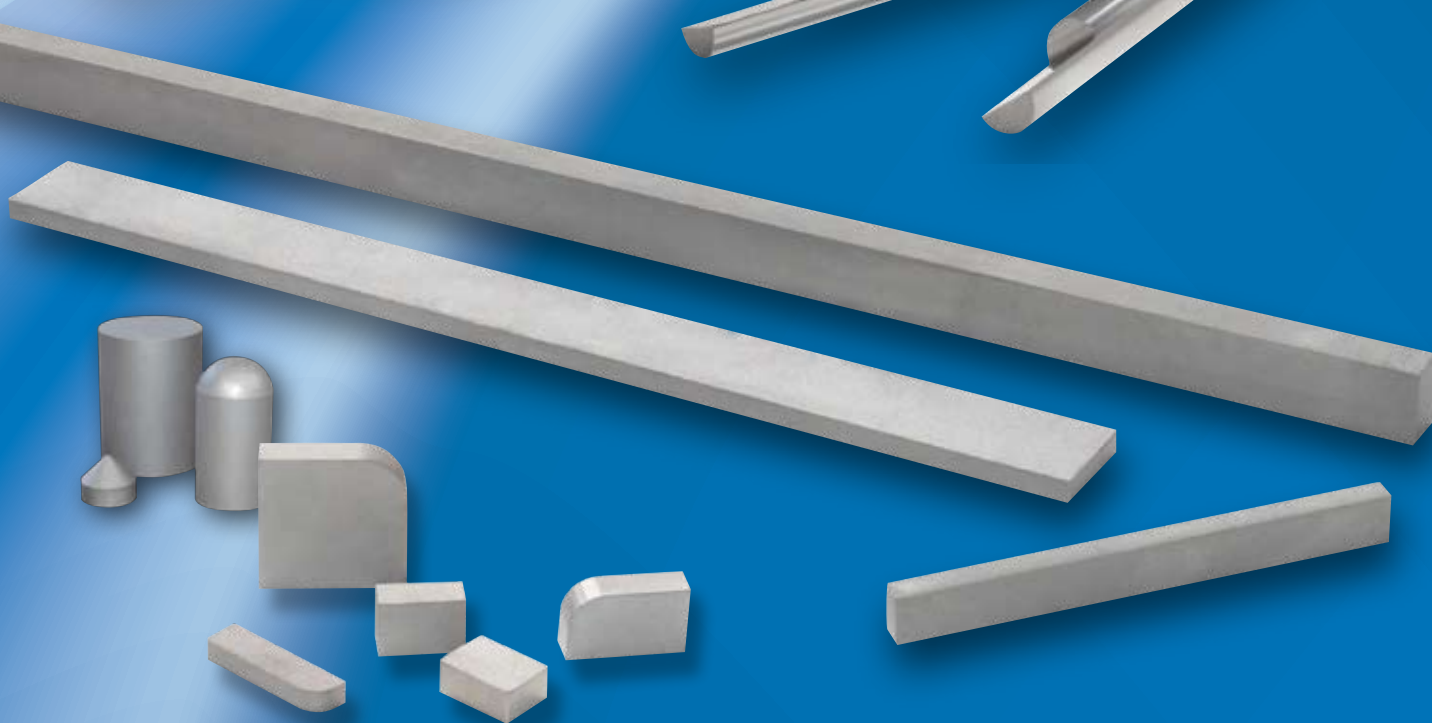
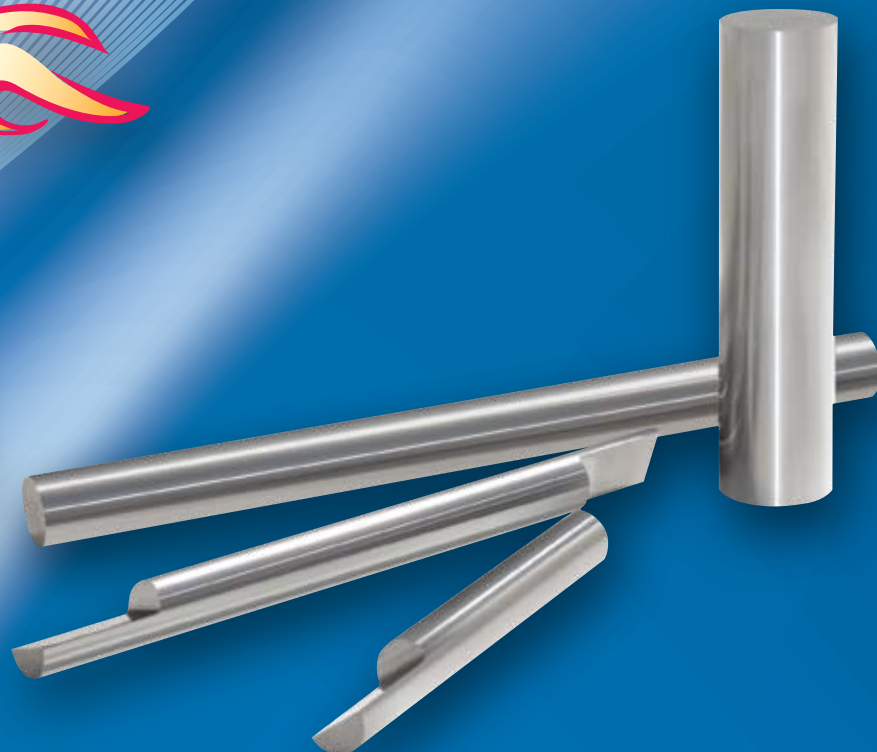


# METAL MONSTER<sup>®</sup>

CATALOG





# SOLID CARBIDE TOOLS

## THE MONSTER WAY

Today's market has placed ever increasing demands on the machine tool industry and manufacturers for increased production efficiency, better quality control and reduced costs.

### **NEXT GENERATIONS TOOLS**

Monster Tool Company has met these challenges by developing a new line of cutting tool products that maximizes the advantages of today's sophisticated CNC Machining Center Technology, as well as all other machining processes. They are custom manufactured to the highest industry standards. Metal Monster and other Monster Tool products are available from stock at your local distributor or catalog company.

### **Metal Monster products offer the following advantages:**

Extensive product offerings in all industry standard sizes.  
Close tolerances and consistent tool accuracy.  
Lab inspected raw materials.  
Highest quality tools.

## POLICIES AND PROCEDURES

### **ORDERING INFORMATION**

All items in the **METAL MONSTER** catalog carry unique item numbers. Using these numbers will keep ordering errors to a minimum and assure that you will receive exactly what you order. Orders will be accepted by phone, fax, and email.

### **PRODUCT WARRANTY**

Monster Tool Company assures that all products sold shall be free from manufacturing and material defects. Monster Tool Company will repair, replace, or issue credit on any product that does not conform with this warranty. Any product that has been altered, used, marked or damaged voids this warranty.

This warranty is in lieu of all other warranties, expressed or implied including any warranty of merchantability or fitness for a particular purpose and is also in lieu of all other obligations or liabilities, including any obligation or liability arising from contract, or otherwise for damages whether direct, indirect or consequential. There are no other warranties except the warranty against defects in material and workmanship set forth above, and we neither assume nor authorize any other person or firm to assume for it any other obligation or liability in connection with our products.

### **TERMS OF ORDER**

All orders are shipped with Net 30 day terms (delinquent at 45 days). No shipment to delinquent accounts. Any account paid after 30 days may become COD on future orders. All orders are subject to credit approval. In the event any legal action or proceeding is brought by any party under this Agreement, the prevailing party shall be entitled to recover the reasonable fees of its attorneys and any costs incurred in such action or proceeding, including costs of appeal, if any, in such amount that the court or administrative body having jurisdiction over such action or proceeding may award.

### **DROP SHIPPING**

All drop ship orders must be faxed or emailed to Monster Tool Company. Monster Tool Company will not assume responsibility for any incorrect shipping information. Monster Tool Company will assess a \$20 fee to any drop ship order that is either returned or re-routed by the shipping company.

### **DISTRIBUTOR DISCOUNT**

Call for terms and conditions.

### **CANCELLATIONS**

On orders for special or altered standard tooling, a cancellation fee will be charged proportionate to the cost incurred on the order at the time of cancellation. On standard catalog tools, cancellations are accepted at no charge unless the order has been shipped or the ordered amount is unusually large in proportion to Monster Tool Company's historical sales.

### **RETURNED GOODS POLICY**

Tools may not be returned without a return goods authorization (RGA) number. Material returned for credit will be subject to a 20% restocking charge. Credits will not be issued for any items that have been modified, altered, marked, machined or used. Special items are not subject to returns or exchanges.

### **SAFETY PRECAUTIONS**

Carbide cutting tools should be used to perform functions that are compatible with the original tool design. Any carbide cutting tool may chip or shatter when broken. Safety glasses and other appropriate safety equipment should be worn by all people in the vicinity of tool use.

### **TECHNICAL ASSISTANCE**

Any technical assistance or application suggestions made by Monster Tool Company personnel are only to assist the customer and in all cases use of such information is solely the customer's responsibility.

### **CLAIMS**

Claims for shortages, damage, or loss must be made within three days of receipt of tool.

### **REVISIONS & PRICING**

Monster Tool Company reserves the right to revise listings, specifications, and pricing in this catalog without notice. Monster Tool Company is not responsible for any typographical or pricing errors in this catalog. Please verify current pricing at the time of your order.



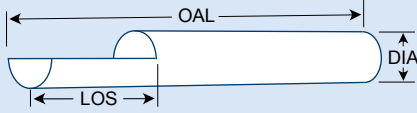
# SPLIT END BLANKS



# METAL MONSTER®

Used For Special Engraving Tools & Cutting Tools

Premium Sub-Micron C-2 Carbide with 10% Cobalt



## DOUBLE END

## SINGLE END

ITEM	DIA	OAL	LOS
710-125150	1/8	1-1/2	3/8
710-125200	1/8	2	3/8
710-125300	1/8	3	3/8
710-125400	1/8	4	3/8
710-125600	1/8	6	3/8
710-187200	3/16	2	1/2
710-187250	3/16	2-1/2	1/2
710-187300	3/16	3	1/2
710-187400	3/16	4	1/2
710-187600	3/16	6	1/2
710-250200	1/4	2	1/2
710-250250	1/4	2-1/2	1/2
710-250300	1/4	3	1/2
710-250400	1/4	4	1/2
710-250600	1/4	6	1/2
710-312250	5/16	2-1/2	1/2
710-312300	5/16	3	1/2
710-312400	5/16	4	1/2
710-312600	5/16	6	1/2
710-375250	3/8	2-1/2	1/2
710-375300	3/8	3	1/2
710-375400	3/8	4	1/2
710-375600	3/8	6	1/2
710-437250	7/16	2-1/2	5/8
710-437300	7/16	3	5/8
710-437400	7/16	4	5/8
710-437600	7/16	6	5/8
710-500300	1/2	3	5/8
710-500400	1/2	4	5/8
710-500600	1/2	6	5/8

ITEM	DIA	OAL	LOS
720-125150	1/8	1-1/2	3/8
720-125200	1/8	2	3/8
720-125300	1/8	3	3/8
720-125400	1/8	4	3/8
720-125600	1/8	6	3/8
720-187200	3/16	2	1/2
720-187250	3/16	2-1/2	1/2
720-187300	3/16	3	1/2
720-187400	3/16	4	1/2
720-187600	3/16	6	1/2
720-250200	1/4	2	1/2
720-250250	1/4	2-1/2	1/2
720-250300	1/4	3	1/2
720-250400	1/4	4	1/2
720-250600	1/4	6	1/2
720-312250	5/16	2-1/2	1/2
720-312300	5/16	3	1/2
720-312400	5/16	4	1/2
720-312600	5/16	6	1/2
720-375250	3/8	2-1/2	1/2
720-375300	3/8	3	1/2
720-375400	3/8	4	1/2
720-375600	3/8	6	1/2
720-437250	7/16	2-1/2	5/8
720-437300	7/16	3	5/8
720-437400	7/16	4	5/8
720-437600	7/16	6	5/8
720-500300	1/2	3	5/8
720-500400	1/2	4	5/8
720-500600	1/2	6	5/8

# COUNTERSINK BLANKS

Included Angle Range: 60°, 82°, 90°, 100° & 120°



DIA	OAL	60°	OAL	82°	OAL	90°	100°	120°
5/16	13/16	715-0010312	11/16	715-0020312	11/16	715-0030312	715-0040312	715-0050312
3/8	13/16	715-0010375	11/16	715-0020375	11/16	715-0030375	715-0040375	715-0050375
1/2	7/8	715-0010500	3/4	715-0020500	3/4	715-0030500	715-0040500	715-0050500
5/8	1	715-0010625	7/8	715-0020625	3/4	715-0030625	715-0040625	715-0050625
3/4	1	715-0010750	7/8	715-0020750	7/8	715-0030750	715-0040750	715-0050750
7/8	1-1/8	715-0010775	15/16	715-0020775	15/16	715-0030775	715-0040775	715-0050775
1	1-1/4	715-0011000	1	715-0021000	1	715-0031000	715-0041000	715-0051000
1-1/4	1-1/2	715-0011250	1-1/4	715-0021250	1-1/4	715-0031250	715-0041250	715-0051250
1-1/2	1-3/4	715-0011500	1-1/2	715-0021500	1-1/2	715-0031500	715-0041500	715-0051500

888-CARBIDE (PHONE)

888-ENDMILL (FAX)

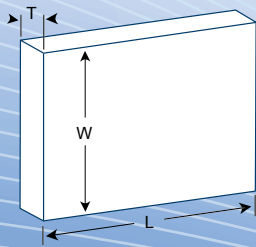
# STANDARD UNGROUND BLANKS

## SERIES 1000

Resistant to Wear  
and Abrasion

Custom Components  
and Assemblies

Replacement Tips for  
Brazed Cutting Tools



### C-2 Grade

Premium Medium Grain  
Carbide with 6-8% Cobalt

### C-5 Grades

Premium Medium Grain  
Carbide with 10% Cobalt



STYLE	T	W	L	C-2	C-5
1010	1/16	1/8	5/8	700-007001	700-007001A
1020	1/16	3/16	1/4	700-007005	700-007005A
1030	1/16	1/4	5/16	700-007010	700-007010A
1040	3/32	3/16	5/16	700-007012	700-007012A
1050	3/32	3/16	1/2	700-007012B	700-007012C
1060	3/32	1/4	3/8	700-007011	700-007011A
1070	3/32	1/4	1/2	700-007013	700-007013A
1080	3/32	5/16	3/8	700-007014	700-007014A
1090	3/32	3/8	3/8	700-007016	700-007017
1100	3/32	3/8	1/2	700-007020	700-007020A
1105	3/32	7/16	1/2	700-007030	700-007032
1110	1/8	3/16	3/4	700-007035	700-007035A
1120	1/8	1/4	1/2	700-007055	700-007056
1130	1/8	1/4	5/8	700-007057	700-007057A
1140	1/8	1/4	3/4	700-007049A	700-007049
1150	1/8	5/16	7/16	700-007050	---
1160	1/8	5/16	1/2	700-007059	700-007060
1170	1/8	5/16	5/8	700-007070	---
1180	1/8	3/8	1/2	700-007080	700-007081
1190	1/8	3/8	3/4	700-007082	700-007083
1200	1/8	1/2	1/2	700-007084	700-007085
1210	1/8	1/2	3/4	700-007086	700-007087
1215	1/8	3/4	3/4	700-007088	700-007088A
1220	5/32	3/8	9/16	700-007089	---
1230	5/32	3/8	3/4	700-007098A	---
1240	5/32	5/8	5/8	700-007099	---
1250	3/16	5/16	7/16	700-007099A	700-007099D
1260	3/16	5/16	5/8	700-007099B	700-007099C
1270	3/16	3/8	1/2	700-007091	700-007093
1280	3/16	3/8	5/8	700-007092	---
1290	3/16	3/8	3/4	700-007090	700-007100
1300	3/16	7/16	5/8	700-007110	---
1310	3/16	7/16	13/16	700-007150	700-007150A
1320	3/16	1/2	1/2	700-007160	700-007160A
1330	3/16	1/2	3/4	700-007180	700-007180A
1340	3/16	3/4	3/4	700-007190	700-007190A
1350	1/4	3/8	9/16	700-007200	---
1360	1/4	3/8	3/4	700-007200A	---
1370	1/4	7/16	5/8	700-007311	---
1380	1/4	1/2	3/4	700-007203	700-007204
1390	1/4	9/16	1	700-007202	---
1400	1/4	5/8	5/8	700-007208	---
1405	1/4	3/4	3/4	700-007208B	---
1410	1/4	3/4	1	700-007201	700-007206
1430	5/16	7/16	15/16	700-007312	---
1440	5/16	1/2	3/4	700-007209	---
1450	5/16	1/2	1	700-007313	---
1460	5/16	5/8	1	700-007314	---
1470	5/16	3/4	3/4	700-007315	---
1475	5/16	3/4	1	700-007317	---
1480	5/16	3/4	1-1/4	700-007316	---
1490	3/8	1/2	3/4	700-007209B	---
1500	3/8	1/2	1	700-007209C	---
1510	3/8	5/8	1	700-007318	---
1520	3/8	3/4	1-1/4	700-007319	---
1525	3/8	3/4	1-1/2	700-007320	---
1530	1/2	3/4	1	700-007321	---
1540	1/2	3/4	1-1/4	700-007322	---
1550	1/2	3/4	1-1/2	700-007323	---



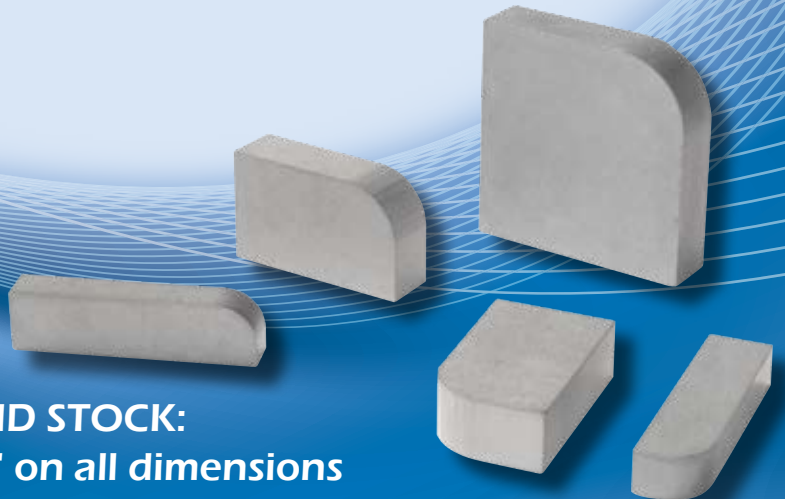
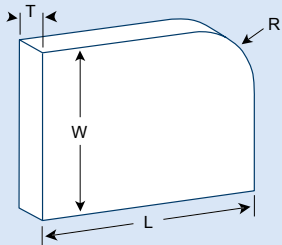
# METAL MONSTER®

## STANDARD UNGROUND BLANKS

### SERIES 2000



CODE	T	W	L	R	C-2	C-5
2010	1/16	1/8	5/8	1/8	700-007208A	---
2020	1/16	3/16	1/4	1/8	700-007209A	700-007209D
2030	1/16	1/4	5/16	1/8	700-007210	700-007210A
2040	3/32	3/16	5/16	1/8	700-007211	700-007211A
2050	3/32	3/16	1/2	1/8	700-007213	700-007214
2060	3/32	1/4	3/8	1/8	700-007215	700-007216
2070	3/32	1/4	1/2	1/8	700-007218	700-007219
2080	3/32	5/16	3/8	3/16	700-007220	---
2090	3/32	3/8	3/8	3/16	700-007221	---
2100	3/32	3/8	1/2	3/16	700-007226	700-007226A
2105	3/32	7/16	1/2	1/4	700-007228	---
2110	1/8	3/16	3/4	1/8	700-007230	700-007231
2120	1/8	1/4	1/2	1/8	700-007232	700-007232A
2130	1/8	1/4	5/8	1/8	700-007233	700-007234
2140	1/8	1/4	3/4	1/8	700-007235	700-007235A
2150	1/8	5/16	7/16	3/16	700-007236	---
2160	1/8	5/16	1/2	3/16	700-007237	---
2170	1/8	5/16	5/8	3/16	700-007241	700-007242
2180	1/8	3/8	1/2	3/16	700-007243	700-007244
2190	1/8	3/8	3/4	3/16	700-007245B	700-007245A
2200	1/8	1/2	1/2	1/4	700-007247	---
2210	1/8	1/2	3/4	1/4	700-007260	700-007265
2215	1/8	3/4	3/4	1/4	700-007270	700-007275
2220	5/32	3/8	9/16	3/16	700-007276	---
2230	5/32	3/8	3/4	3/16	700-007280	---
2240	5/32	5/8	5/8	1/4	700-007282	---
2250	3/16	5/16	7/16	3/16	700-007284	---
2260	3/16	5/16	5/8	3/16	700-007290	---
2270	3/16	3/8	1/2	3/16	700-007292	---
2280	3/16	3/8	5/8	3/16	700-007294	---
2290	3/16	3/8	3/4	3/16	700-007300	---
2300	3/16	7/16	5/8	1/4	700-007302	---
2310	3/16	7/16	13/16	1/4	700-007304	700-007304A
2320	3/16	1/2	1/2	1/4	700-007306	700-007306A
2330	3/16	1/2	3/4	1/4	700-007308	700-007308A
2340	3/16	3/4	3/4	1/4	700-007310	---



**THICKNESS:**  
1/16" to 5/16"  
3/8" to 1"

**MINIMUM GRIND STOCK:**  
+0.04" - +0.015" on all dimensions  
+0.06" - +0.020" on all dimensions

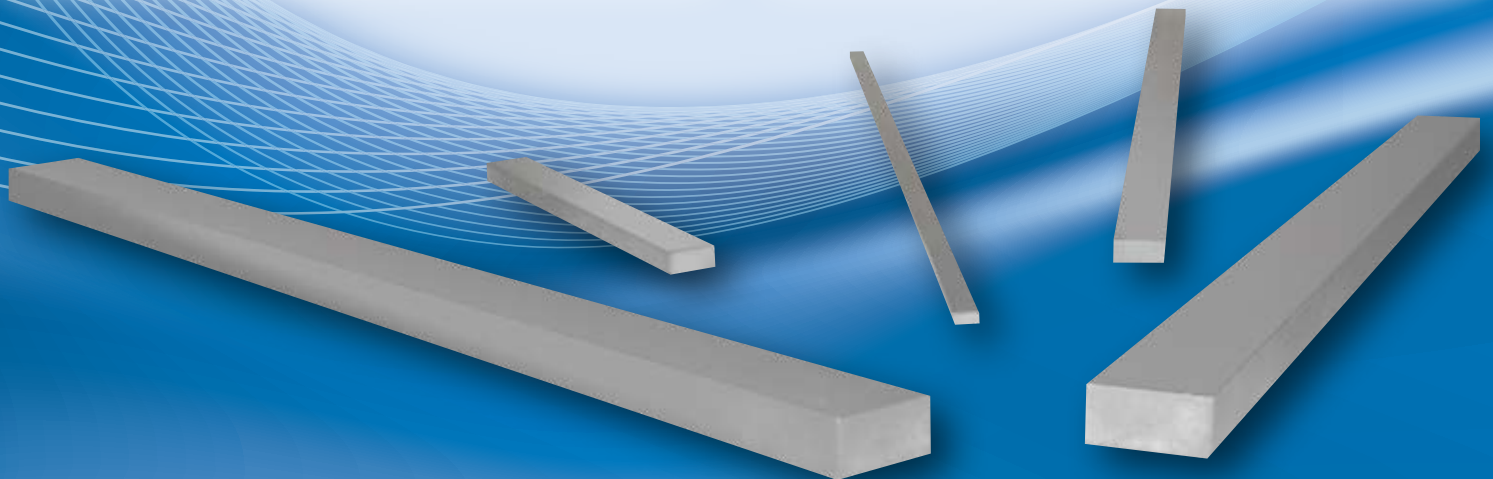


# STB & STB-L BLANKS

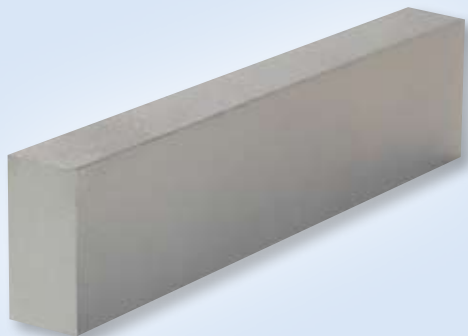
**Widely used as:**  
**Wear Parts**  
**Tool**  
**Grinder Rests**  
**Appliance Parts**

ITEM	STYLE	T	W	OAL
777-001038	STB-12	1/32	1/16	1
777-001039	STB-12A	1/32	1/16	1-1/2
777-001041	STB-13A	3/64	3/32	13/16
777-001040	STB-13	3/64	3/32	1
777-001042	STB-22L	1/16	1/16	6
777-001047	STB-24A	1/16	1/8	1
777-001047E	STB-24C	1/16	1/8	1-1/4
777-001047F	STB-24D	1/16	1/8	1-1/2
777-001047B	STB-24B	1/16	1/8	3
777-001047G	STB-24L	1/16	1/8	6
777-001048	STB-26A	1/16	3/16	1
777-001048C	STB-26C	1/16	3/16	3
777-001048H	STB-26L	1/16	3/16	6
777-001059	STB-28A	1/16	1/4	1
777-001059A	STB-28B	1/16	1/4	1-1/4
777-001060	STB-28D	1/16	1/4	3
777-001061	STB-28L	1/16	1/4	6
777-001062	STB-210L	1/16	5/16	6
777-001067	STB-212L	1/16	3/8	6
777-001067A	STB-216L	1/16	1/2	6
777-001067B	STB-220L	1/16	5/8	6
777-001067C	STB-224L	1/16	3/4	6
777-001067D	STB-232L	1/16	1	6
777-001045	STB-14	5/64	1/8	1-1/8
777-001068	STB-34	3/32	1/8	5
777-001068A	STB-34L	3/32	1/8	8

ITEM	STYLE	T	W	OAL
777-001064	STB-36	3/32	3/16	1-1/8
777-001069	STB-36A	3/32	3/16	1-1/4
777-001069A	STB-36L	3/32	3/16	8
777-001050C	STB-38A	3/32	1/4	1
777-001050D	STB-38B	3/32	1/4	1-1/2
777-001050	STB-38D	3/32	1/4	5
777-001050E	STB-38L	3/32	1/4	8
777-001065	STB-310A	3/32	5/16	2
777-001065A	STB-310B	3/32	5/16	3
777-001066	STB-310C	3/32	5/16	5
777-001066C	STB-310L	3/32	5/16	8
777-001070	STB-312	3/32	3/8	5
777-001070D	STB-312C	3/32	3/8	6
777-001070C	STB-312L	3/32	3/8	8
777-001072	STB-316	3/32	1/2	6
777-001072A	STB-316L	3/32	1/2	8
777-001079	STB-320	3/32	5/8	6
777-001079A	STB-320L	3/32	5/8	8
777-001073	STB-324	3/32	3/4	6
777-001074	STB-328	3/32	7/8	6
777-001076	STB-332	3/32	1	6
777-001077	STB-336	3/32	1-1/8	6
777-001078	STB-340	3/32	1-1/4	6
777-001080	STB-348	3/32	1-1/2	6
777-001083	STB-44L	1/8	1/8	12
777-001086	STB-46	1/8	3/16	6
777-001086A	STB-46L	1/8	3/16	12
777-001052C	STB-48A	1/8	1/4	1
777-001052D	STB-48B	1/8	1/4	1-1/4
777-001052E	STB-48F	1/8	1/4	1-1/2
777-001052F	STB-48C	1/8	1/4	2-1/4
777-001052G	STB-48D	1/8	1/4	3
777-001052H	STB-48E	1/8	1/4	6
777-001052I	STB-48L	1/8	1/4	12
777-001080E	STB-410A	1/8	5/16	1-1/2
777-001080F	STB-410B	1/8	5/16	3
777-001080B	STB-410	1/8	5/16	6
777-001080G	STB-410L	1/8	5/16	12
777-001082	STB-412D	1/8	3/8	1
777-001081D	STB-412A	1/8	3/8	2







Premium Medium Grain Carbide  
with 6-8% Cobalt



ITEM	STYLE	T	W	OAL
777-001081	STB-412B	1/8	3/8	3
777-001082A	STB-412C	1/8	3/8	6
777-001082E	STB-412L	1/8	3/8	12
777-001085	STB-416A	1/8	1/2	1
777-001090	STB-416B	1/8	1/2	1-1/2
777-001087	STB-416C	1/8	1/2	3
777-001084	STB-416	1/8	1/2	6
777-001084A	STB-416L	1/8	1/2	12
777-001091	STB-420	1/8	5/8	6
777-001091A	STB-420L	1/8	5/8	12
777-001095	STB-424	1/8	3/4	6
777-001095A	STB-424L	1/8	3/4	12
777-001096	STB-428	1/8	7/8	6
777-001055	STB-432	1/8	1	6
777-001055A	STB-432L	1/8	1	12
777-010555	STB-436	1/8	1-1/8	6
777-0140554	STB-440	1/8	1-1/4	6
777-010553	STB-448	1/8	1-1/2	6
777-010552	STB-456	1/8	1-3/4	6
777-010551	STB-512C	5/32	3/8	6
777-010550	STB-516	5/32	1/2	6
777-010549	STB-520	5/32	5/8	6
777-010548	STB-524	5/32	3/4	6
777-010547	STB-528	5/32	7/8	6
777-010546	STB-532	5/32	1	6
777-010545	STB-536	5/32	1-1/8	6
777-010544	STB-540	5/32	1-1/4	6
777-010543	STB-544	5/32	1-3/8	6
777-010542	STB-548	5/32	1-1/2	6
777-010541	STB-564	5/32	2	6
777-001056	STB-66L	3/16	3/16	12
777-001058B	STB-68A	3/16	1/4	3
777-001058	STB-68	3/16	1/4	6
777-001058A	STB-68L	3/16	1/4	12
777-001115	STB-610A	3/16	5/16	3
777-001116	STB-610	3/16	5/16	6
777-001117	STB-610L	3/16	5/16	12
777-001100A	STB-612A	3/16	3/8	3
777-001100	STB-612	3/16	3/8	6
777-001100B	STB-612L	3/16	3/8	12

ITEM	STYLE	T	W	OAL
777-001110	STB-616A	3/16	1/2	3
777-001110A	STB-616	3/16	1/2	6
777-001110B	STB-616L	3/16	1/2	12
777-001057A	STB-620A	3/16	5/8	3
777-001057	STB-620	3/16	5/8	6
777-001057B	STB-620L	3/16	5/8	12
777-001051B	STB-624B	3/16	3/4	2
777-001051A	STB-624A	3/16	3/4	4
777-001051	STB-624	3/16	3/4	6
777-001051C	STB-624L	3/16	3/4	12
777-001151	STB-628	3/16	7/8	6
777-001114A	STB-632	3/16	1	6
777-001114	STB-632L	3/16	1	12
777-001113A	STB-640	3/16	1-1/4	6
777-001113	STB-640L	3/16	1-1/4	12
777-010113	STB-648	3/16	1-1/2	6
777-001450	STB-88L	1/4	1/4	12
777-001190	STB-812A	1/4	3/8	3
777-001188	STB-812	1/4	3/8	6
777-001190A	STB-812L	1/4	3/8	12
777-001195C	STB-816C	1/4	1/2	2
777-001195A	STB-816A	1/4	1/2	3
777-001195B	STB-816B	1/4	1/2	4
777-001195	STB-816	1/4	1/2	6
777-001195D	STB-816L	1/4	1/2	12
777-001210B	STB-820A	1/4	5/8	3
777-001210	STB-820	1/4	5/8	6
777-001210A	STB-820L	1/4	5/8	12
777-001290A	STB-824A	1/4	3/4	3
777-001290	STB-824	1/4	3/4	6
777-001290B	STB-824L	1/4	3/4	12
777-001350	STB-832	1/4	1	6
777-001400	STB-832L	1/4	1	12
777-001420	STB-840L	1/4	1-1/4	12
777-001421	STB-1212L	3/8	3/8	12
777-001422	STB-1216L	3/8	1/2	12
777-001423	STB-1224L	3/8	3/4	12
777-001424	STB-1232L	3/8	1	12
777-001425	STB-1616L	1/2	1/2	12
777-001426	STB-1624L	1/2	3/4	12

Minimum Grind Stock Tolerances:

Thickness: +0.008"      Width: +0.012"      Length: +0.008"

Parallelism & Flatness: within 0.020"



# SOLID CARBIDE RODS

Superior overall performance

- High abrasion resistance
- Shock resistant, will not chip or break under normal machining conditions
- Unexcelled in interrupted cuts
- Premium Sub-Micron C-2 Carbide with 10% Cobalt

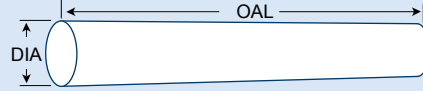
## CUT TO LENGTH

ITEM	DESCRIPTION
701-001000	.025 Dia x 1-1/2 C/Less Grd Rod
701-001150	1/32 Dia x 1-1/2 C/Less Grd Rod
701-001350	3/64 Dia x 1-1/2 C/Less Grd Rod
701-001450	3/64 Dia x 2 C/Less Grd Rod
701-001550	1/16 Dia x 1-1/2 C/Less Grd Rod
701-001750	5/64 Dia x 2 C/Less Grd Rod
701-001850	3/32 Dia x 1-1/2 C/Less Grd Rod
701-001950	3/32 Dia x 2 C/Less Grd Rod
701-002050	3/32 Dia x 2-1/2 C/Less Grd Rod
701-002350	7/64 Dia x 2-1/2 C/Less Grd Rod
701-002450	1/8 Dia x 1-1/2 C/Less Grd Rod
701-002455	1/8 Dia x 1-3/4 C/Less Grd Rod
701-002550	1/8 Dia x 2 C/Less Grd Rod
701-002650	1/8 Dia x 2-1/4 C/Less Grd Rod
701-002750	1/8 Dia x 2-1/2 C/Less Grd Rod
701-002850	1/8 Dia x 3 C/Less Grd Rod
701-002950	1/8 Dia x 4 C/Less Grd Rod
702-005900	1/8 Dia x 6 C/Less Grd Rod
701-003050	5/32 Dia x 1-1/2 C/Less Grd Rod
701-003053	5/32 Dia x 2 C/Less Grd Rod
701-003066	5/32 Dia x 2-1/2 C/Less Grd Rod
701-003250	3/16 Dia x 1-1/2 C/Less Grd Rod
701-003350	3/16 Dia x 2 C/Less Grd Rod
701-003550	3/16 Dia x 2-1/2 C/Less Grd Rod
701-003650	3/16 Dia x 3 C/Less Grd Rod
701-003750	3/16 Dia x 4 C/Less Grd Rod
702-006300	3/16 Dia x 6 C/Less Grd Rod
701-003850	1/4 Dia x 2 C/Less Grd Rod
701-004050	1/4 Dia x 2-1/2 C/Less Grd Rod
701-004150	1/4 Dia x 3 C/Less Grd Rod
701-004250	1/4 Dia x 4 C/Less Grd Rod
702-006750	1/4 Dia x 6 C/Less Grd Rod
701-004350	5/16 Dia x 2 C/Less Grd Rod
701-004450	5/16 Dia x 2-1/2 C/Less Grd Rod

ITEM	DESCRIPTION
701-004550	5/16 Dia x 3 C/Less Grd Rod
701-004650	5/16 Dia x 4 C/Less Grd Rod
702-007150	5/16 Dia x 6 C/Less Grd Rod
701-004750	3/8 Dia x 2 C/Less Grd Rod
701-004850	3/8 Dia x 2-1/2 C/Less Grd Rod
701-004950	3/8 Dia x 3 C/Less Grd Rod
701-005050	3/8 Dia x 3-1/2 C/Less Grd Rod
701-005150	3/8 Dia x 4 C/Less Grd Rod
701-005250	3/8 Dia x 6 C/Less Grd Rod
701-005350	7/16 Dia x 2-1/2 C/Less Grd Rod
701-005450	7/16 Dia x 2-3/4 C/Less Grd Rod
701-005490	7/16 Dia x 3 C/Less Grd Rod
701-005550	7/16 Dia x 4 C/Less Grd Rod
701-005650	7/16 Dia x 6 C/Less Grd Rod
701-005750	1/2 Dia x 2 C/Less Grd Rod
701-005850	1/2 Dia x 2-1/2 C/Less Grd Rod
701-005950	1/2 Dia x 3 C/Less Grd Rod
701-005975	1/2 Dia x 3-1/2 C/Less Grd Rod
701-006050	1/2 Dia x 4 C/Less Grd Rod
701-006150	1/2 Dia x 6 C/Less Grd Rod
701-006250	9/16 Dia x 3-1/2 C/Less Grd Rod
702-007850	9/16 Dia x 6 C/Less Grd Rod
701-006280	5/8 Dia x 3 C/Less Grd Rod
701-006350	5/8 Dia x 3-1/2 C/Less Grd Rod
701-006355	5/8 Dia x 4 C/Less Grd Rod
701-006450	5/8 Dia x 5 C/Less Grd Rod
701-006550	5/8 Dia x 6 C/Less Grd Rod
701-006696	3/4 Dia x 3-1/2 C/Less Grd Rod
701-006750	3/4 Dia x 4 C/Less Grd Rod
701-006850	3/4 Dia x 5 C/Less Grd Rod
701-006950	3/4 Dia x 6 C/Less Grd Rod
701-007050	3/4 Dia x 7 C/Less Grd Rod
701-007150	7/8 Dia x 4 C/Less Grd Rod
702-008150	7/8 Dia x 6 C/Less Grd Rod
701-007250	1 Dia x 4 C/Less Grd Rod
701-007350	1 Dia x 5 C/Less Grd Rod
701-007450	1 Dia x 6 C/Less Grd Rod

Widest application with only one grade of carbide





## LONG GROUND

ITEM	DESCRIPTION
702-100200	1/32 Dia x 12 C/Less Grd Rod
702-100350	3/64 Dia x 12 C/Less Grd Rod
702-100450	1/16 Dia x 12 C/Less Grd Rod
702-100550	5/64 Dia x 12 C/Less Grd Rod
702-100650	3/32 Dia x 12 C/Less Grd Rod
702-100750	7/64 Dia x 12 C/Less Grd Rod
702-100900	1/8 Dia x 12 C/Less Grd Rod
702-101000	9/64 Dia x 12 C/Less Grd Rod
702-101100	5/32 Dia x 12 C/Less Grd Rod
702-101200	11/64 Dia x 12 C/Less Grd Rod
702-101300	3/16 Dia x 12 C/Less Grd Rod
702-101450	13/64 Dia x 12 C/Less Grd Rod
702-101550	7/32 Dia x 12 C/Less Grd Rod
702-101650	15/64 Dia x 12 C/Less Grd Rod
702-101750	1/4 Dia x 12 C/Less Grd Rod
702-101850	17/64 Dia x 12 C/Less Grd Rod
702-101950	9/32 Dia x 12 C/Less Grd Rod
702-102050	19/64 Dia x 12 C/Less Grd Rod
702-102150	5/16 Dia x 12 C/Less Grd Rod
702-102250	21/64 Dia x 12 C/Less Grd Rod
702-102350	11/32 Dia x 12 C/Less Grd Rod
702-102450	23/64 Dia x 12 C/Less Grd Rod
702-102550	3/8 Dia x 12 C/Less Grd Rod
702-102650	25/64 Dia X 12 C/Less Grd Rod
702-102750	13/32 Dia X 12 C/Less Grd Rod
702-102770	27/64 Dia X 12 C/Less Grd Rod
702-102850	7/16 Dia x 12 C/Less Grd Rod
702-102890	29/64 Dia X 12 C/Less Grd Rod
702-102950	15/32 Dia X 12 C/Less Grd Rod
702-102995	31/64 Dia X 12 C/Less Rod
702-103050	1/2 Dia x 12 C/Less Grd Rod
702-103080	17/32 Dia X 12 C/Less Grd Rod
702-103150	9/16 Dia x 12 C/Less Grd Rod
702-103250	5/8 Dia x 12 C/Less Grd Rod
702-103350	11/16 Dia x 12 C/Less Grd Rod
702-103450	3/4 Dia x 12 C/Less Grd Rod
702-103550	13/16 Dia X 12 C/Less Grd Rod
702-103650	7/8 Dia x 12 C/Less Grd Rod
702-103850	1 Dia x 12 C/Less Grd Rod

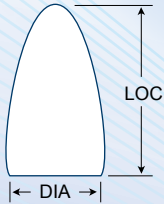
## LONG UNGROUND

ITEM	CODE
702-100150	1/32 Dia x 12 Unground Rod
702-100300	3/64 Dia x 12 Unground Rod
702-100400	1/16 Dia x 12 Unground Rod
702-100500	5/64 Dia x 12 Unground Rod
702-100600	3/32 Dia x 12 Unground Rod
702-100700	7/64 Dia x 12 Unground Rod
702-100850	1/8 Dia x 12 Unground Rod
702-100950	9/64 Dia x 12 Unground Rod
702-101050	5/32 Dia x 12 Unground Rod
702-101150	11/64 Dia x 12 Unground Rod
702-101250	3/16 Dia x 12 Unground Rod
702-101400	13/64 Dia x 12 Unground Rod
702-101500	7/32 Dia x 12 Unground Rod
702-101600	15/64 Dia x 12 Unground Rod
702-101700	1/4 Dia x 12 Unground Rod
702-101800	17/64 Dia x 12 Unground Rod
702-101900	9/32 Dia x 12 Unground Rod
702-102000	19/64 Dia x 12 Unground Rod
702-102100	5/16 Dia x 12 Unground Rod
702-102200	21/64 Dia x 12 Unground Rod
702-102300	11/32 Dia x 12 Unground Rod
702-102400	23/64 Dia x 12 Unground Rod
702-102500	3/8 Dia x 12 Unground Rod
702-102600	25/64 Dia x 12 Unground Rod
702-102700	13/32 Dia x 12 Unground Rod
702-102760	27/64 Dia x 12 Unground Rod
702-102800	7/16 Dia x 12 Unground Rod
702-102880	29/64 Dia x 12 Unground Rod
702-102900	15/32 Dia x 12 Unground Rod
702-102990	31/64 Dia x 12 Unground Rod
702-103000	1/2 Dia x 12 Unground Rod
702-103070	17/32 Dia x 12 Unground Rod
702-103100	9/16 Dia x 12 Unground Rod
702-103200	5/8 Dia x 12 Unground Rod
702-103300	11/16 Dia x 12 Unground Rod
702-103400	3/4 Dia x 12 Unground Rod
702-103500	13/16 Dia x 12 Unground Rod
702-103600	7/8 Dia x 12 Unground Rod
702-103800	1 Dia x 12 Unground Rod

Greater transverse  
rupture strength than  
high speed steel



# SOLID CARBIDE BURR BLANKS



C-2 Grade

ITEM	STYLE	DIA	LOC
700-008150A	BSA-52	5/32	1/2
700-008151	BSA-53	3/16	1/2
700-008150	BSA-51	1/4	1/2
700-008169	BSA-2	5/16	3/4
700-008170	BSA-3	3/8	3/4
700-008194	BSA-3L	3/8	1
700-008172	BSA-3X	3/8	1-1/2
700-008175	BSA-4	7/16	1
700-008180	BSA-5	1/2	1
700-008181	BSA-6	5/8	1
700-008182B	BSA-15	3/4	1/2
700-008182C	BSA-16	3/4	3/4
700-008182	BSA-7	3/4	1
700-008182A	BSA-8	7/8	1
700-008182D	BSA-17	1	1/4
700-008183	BSA-9	1	1
700-008186	BSB-51	1/4	3/16
700-008187A	BSC-52	5/32	1/2
700-008188	BSC-53	3/16	1/2
700-008187	BSC-51	1/4	1/2
700-008189	BSC-2	5/16	3/4
700-008190	BSC-3	3/8	3/4
700-008193	BSC-3L	3/8	1
700-008192	BSC-3X	3/8	1-1/2
700-008199	BSC-4	7/16	1
700-008200	BSC-5	1/2	1
700-008201	BSC-6	5/8	1
700-008202A	BSC-15	3/4	1/2
700-008202B	BSC-16	3/4	3/4
700-008202	BSC-7	3/4	1
700-008203	BSC-9	1	1
700-008210A	BSD-52	5/32	5/32
700-008211	BSD-53	3/16	5/32
700-008210	BSD-51	1/4	7/32
700-008215	BSD-2	5/16	1/4
700-008220	BSD-3	3/8	5/16
700-008223	BSD-4	7/16	3/8
700-008225	BSD-5	1/2	7/16
700-008226	BSD-6	5/8	9/16
700-008226A	BSD-7	3/4	11/16
700-008226B	BSD-9	1	15/16

ITEM	STYLE	DIA	LOC
700-008228	BSE-53	3/16	9/32
700-008227	BSE-51	1/4	3/8
700-008230	BSE-3	3/8	5/8
700-008240	BSE-5	1/2	7/8
700-008241	BSE-6	5/8	1
700-008242	BSE-7	3/4	1
700-008246	BSF-53	3/16	1/2
700-008245	BSF-51	1/4	1/2
700-008250	BSF-3	3/8	3/4
700-008251	BSF-4	7/16	1
700-008263	BSF-13	1/2	3/4
700-008260	BSF-5	1/2	1
700-008261	BSF-6	5/8	1
700-008262	BSF-7	3/4	1
700-008263A	BSF-14	3/4	1-1/4
700-008264	BSF-15	3/4	1-1/2
700-008266	BSF-17	1-1/8	2
700-008269A	BSG-53	3/16	1/2
700-008265	BSG-51	1/4	1/2
700-008269	BSG-2	5/16	3/4
700-008270	BSG-3	3/8	3/4
700-008282A	BSG-13	1/2	3/4
700-008280	BSG-5	1/2	1
700-008281	BSG-6	5/8	1
700-008282	BSG-7	3/4	1
700-008282B	BSG-15	3/4	1-1/2
700-008282C	BSH-53	3/16	3/8
700-008283	BSH-2	5/16	3/4
700-008286	BSH-5	1/2	1-1/4
700-008284	BSH-6	5/8	1-7/16
700-008286A	BSH-7	3/4	1-5/8
700-008286B	BSJ-3	3/8	5/16
700-008310	BSJ-5	1/2	7/16
700-008311	BSJ-7	3/4	11/16
700-008335	BSJ-9	1	15/16
700-008328	BSK-3	3/8	3/16
700-008287A	BSK-5	1/2	1/4
700-008331	BSK-6	5/8	5/16
700-008332	BSK-7	3/4	3/8
700-008334	BSK-9	1	1/2
700-008287B	BSL-53	3/16	1/2
700-008287	BSL-2	5/16	7/8
700-008288	BSL-3	3/8	1-1/16
700-008289	BSL-4	1/2	1-1/8
700-008289B	BSL-5	5/8	1-3/16
700-008289A	BSL-6	5/8	1-5/16
700-008289C	BSL-7	3/4	1-1/2
700-008292	BSM-53	3/16	1/2
700-008291	BSM-51	1/4	1/2
700-008295	BSM-4	3/8	5/8
700-008300	BSM-5	1/2	7/8
700-008301	BSM-6	5/8	1
700-008303	BSN-53	3/16	1/4
700-008320	BSN-51	1/4	1/4
700-008305	BSN-2	3/8	3/8
700-008306	BSN-4	1/2	1/2
700-008308	BSN-6	5/8	3/4
700-008309	BSN-7	3/4	5/8





# THE MOST COMPLETE & LAST GREAT AMERICAN CARBIDE BRAND

## BURR MONSTER

Complete offering of carbide burrs for the metalworking and energy industries including single, double, aluma, fine, diamond, and coarse cut geometries. Carbide burr sets, specials, extended length, flex shank, coatings & sharpening services also available.



## DRILL MONSTER

Full offering of solid carbide jobber length, screw machine, straight flute, spade, spotting & center drills. All drills are available in TiN & TiAlN coatings.



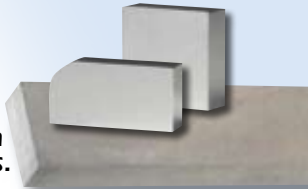
## MEGA MONSTER

High performance carbide endmills made from premium sub-micron grain carbide. High helix, variable helix, roughers, chipbreakers & finishers with the finest heat resistant coatings in the industry.



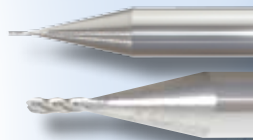
## METAL MONSTER

Complete offering of solid carbide STB and STB-L rectangular blanks in C2 grade, 1000/2000 style blanks stocked in C2 & C5 grades, 12" random rod, cut to length rod, countersink & burr blanks.



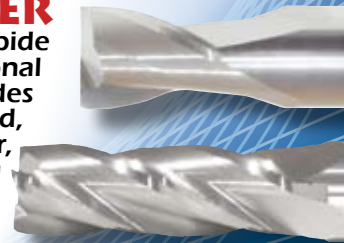
## MICRO MONSTER

Solid carbide miniature endmills ground from premium sub-micron substrate in 2 & 4 flute geometries, square & ball end, regular (3 x O.D.) & stub (1.5 x O.D.) flute lengths. Diameters range from .005" to .065" diameter by .001" increments & from .065" diameter to .120" diameter by .005" increments. Diameter tolerance of +/- .0005" & h6 shank tolerance.



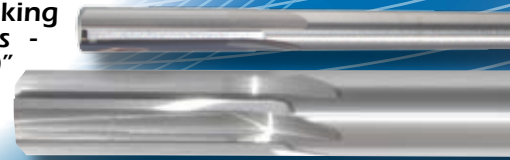
## MILL MONSTER

Offering advanced tool geometry for solid carbide endmills that will outperform conventional style tools. Our complete offering includes 2, 3 & 4 flute geometries in square end, ball end, corner radius, stub, regular, long, extra long & extended extra long lengths are stocked with TiN, TiCN & TiAlN coatings. Fractional and metric sizes range from 1/64th" - 1" diameter.



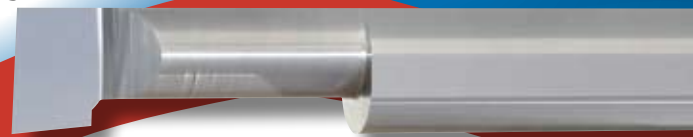
## REAM MONSTER

World's largest straight flute chucking reamer provider of fractional, decimal, wire, letter & metric sizes - over 800 sizes always in stock. Stocked by .0005" increments to .2650" diameter & by .001" increments over .2650" to .5050" diameter. Fractional sizes range 1/32 - 3/4", metric from 1.0mm - 16mm, Wire 1-70, and letter A-Z.



## TOOL MONSTER

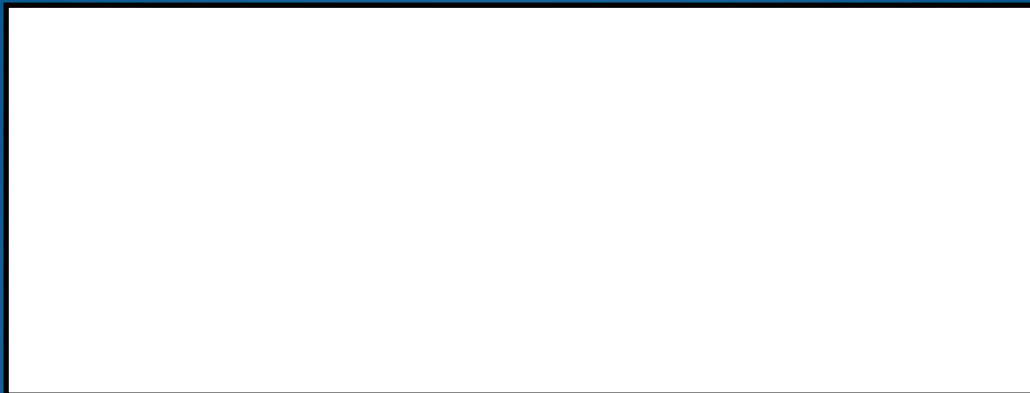
Single & double end engraving blanks, 60 & 90 degree drill mills & chamfer mills, solid carbide boring bars, single & double end countersinks offered in single, 3, 4, & 6 flute geometries in 60°, 82°, 90°, 100°, 110° & 120° included angles.





# METAL MONSTER®

Your Distributor



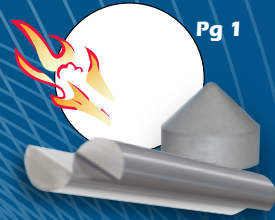
All Monster Products  
Exclusively Manufactured

by:



Monster Tool Company  
P.O. Box 1749  
San Marcos, CA 92079 USA

Tel: 1-888-CARBIDE Fax: 1-888-ENDMILL  
Local Tel: 1-760-477-1000 Fax: 1-760-477-1112  
[www.monstertool.com](http://www.monstertool.com) [sales@monstertool.com](mailto:sales@monstertool.com)



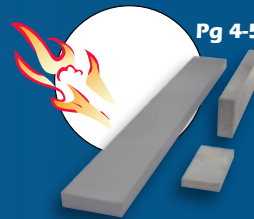
Pg 1



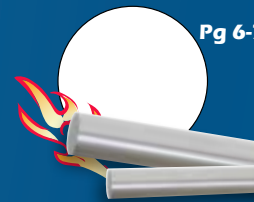
Pg 2



Pg 3



Pg 4-5



Pg 6-7



Pg 8