

REAM MONSTER[®]

CATALOG



MONSTER TOOL COMPANY

THE MONSTER WAY

Today's market has placed ever increasing demands on the machine tool industry and manufacturers for increased production efficiency, better quality control and reduced costs.

NEXT GENERATIONS TOOLS

Monster Tool Company has met these challenges by developing a new line of cutting tool products that maximizes the advantages of today's sophisticated CNC Machining Center Technology, as well as all other machining processes. They are custom manufactured to the highest industry standards. Ream Monster and other Monster Tool products are available from stock at your local distributor or catalog company.

Ream Monster products offer the following advantages:

- Extensive product offerings in all industry standard sizes.
- Cutting flutes are precision ground.
- Close tolerances and consistent tool accuracy.
- Lab inspected raw materials.
- Highest quality tools.

SUPERIOR TOOL PERFORMANCE

Ream Monster products offer the advantage of very close tolerance precision ground cutting tools. This precision results in superior tool finishes on all cutting surfaces providing cleaner cuts and better work piece finishes. Monster Tool Company products are manufactured from premium sub-micron C - 2 carbide material with 10% cobalt; these tools are engineered to better serve the needs of modern metalworking in a wide range of applications.

POLICIES AND PROCEDURES

ORDERING INFORMATION

All items in the **REAM MONSTER** catalog carry unique part numbers. Using these numbers will keep ordering errors to a minimum and assure that you will receive exactly what you order. Orders will be accepted by phone, fax, and email.

PRODUCT WARRANTY

Monster Tool Company assures that all products sold shall be free from manufacturing and material defects. Monster Tool Company will repair, replace, or issue credit on any product that does not conform with this warranty. Any product that has been altered, used, marked or damaged voids this warranty.

This warranty is in lieu of all other warranties, expressed or implied including any warranty of merchantability or fitness for a particular purpose and is also in lieu of all other obligations or liabilities, including any obligation or liability arising from contract, or otherwise for damages whether direct, indirect or consequential. There are no other warranties except the warranty against defects in material and workmanship set forth above, and we neither assume nor authorize any other person or firm to assume for it any other obligation or liability in connection with our products.

TERMS OF ORDER

All orders are shipped with Net 30 day terms (delinquent at 45 days). No shipment to delinquent accounts. Any account paid after 30 days may become COD on future orders. All orders are subject to credit approval.

DROP SHIPPING

All drop ship orders must be faxed or emailed to Monster Tool Company. Monster Tool Company will not assume responsibility for any incorrect shipping information. Monster Tool Company will assess a \$20 fee to any drop ship order that is either returned or re-routed by the shipping company.

DISTRIBUTOR DISCOUNT

Call for terms and conditions.

CANCELLATIONS

On orders for special or altered standard tooling, a cancellation fee will be charged proportionate to the cost incurred on the order at the time of cancellation. On standard catalog tools, cancellations are accepted at no charge unless the order has been shipped or the ordered amount is unusually large in proportion to Monster Tool Company's historical sales.

RETURNED GOODS POLICY

Tools may not be returned without a return goods authorization (RGA) number. Material returned for credit will be subject to a 20% restocking charge. Credits will not be issued for any items that have been modified, altered, marked, machined or used. Special items are not subject to returns or exchanges.

SAFETY PRECAUTIONS

Carbide cutting tools should be used to perform functions that are compatible with the original tool design. Any carbide cutting tool may chip or shatter when broken. Safety glasses and other appropriate safety equipment should be worn by all people in the vicinity of tool use.

TECHNICAL ASSISTANCE

Any technical assistance or application suggestions made by Monster Tool Company personnel are only to assist the customer and in all cases use of such information is solely the customer's responsibility.

CLAIMS

Claims for shortages, damage, or loss must be made within three days of receipt of tool.

REVISIONS & PRICING

Monster Tool Company reserves the right to revise listings, specifications, and pricing in this catalog without notice. Monster Tool Company is not responsible for any typographical or pricing errors in this catalog. Please verify current pricing at the time of your order.



Premium Sub-Micron C-2 Carbide with 10% Cobalt

REAM MONSTER®

Solid Carbide Chucking Reamers

MONSTER ITEM #	DEC. INCHES	SIZE	L.O.C.	O.A.L.
500-003070	0.0280	70	1/4	1-1/2
500-003069	0.0292	69	1/4	1-1/2
500-0000300	0.0300		1/4	1-1/2
500-003068	0.0310	68	1/4	1-1/2
500-001002	0.0312	1/32	1/4	1-1/2
500-0000315	0.0315		1/4	1-1/2
500-003067	0.0320	67	1/4	1-1/2
500-0000325	0.0325		1/4	1-1/2
500-003066	0.0330	66	1/4	1-1/2
500-0000335	0.0335		1/4	1-1/2
500-0000340	0.0340		1/4	1-1/2
500-0000345	0.0345		1/4	1-1/2
500-003065	0.0350	65	1/4	1-1/2
500-0000355	0.0355		1/4	1-1/2
500-003064	0.0360	64	1/4	1-1/2
500-0000365	0.0365		1/4	1-1/2
500-003063	0.0370	63	1/4	1-1/2
500-0000375	0.0375		1/4	1-1/2
500-003062	0.0380	62	1/4	1-1/2
500-0000385	0.0385		1/4	1-1/2
500-003061	0.0390	61	1/4	1-1/2
500-004001	0.0394	1.0 mm	1/4	1-1/2
500-0000395	0.0395		1/4	1-1/2
500-003060	0.0400	60	1/4	1-1/2
500-0000405	0.0405		1/4	1-1/2
500-003059	0.0410	59	1/4	1-1/2
500-0000415	0.0415		1/4	1-1/2
500-003058	0.0420	58	3/8	1-1/2
500-0000425	0.0425		3/8	1-1/2
500-003057	0.0430	57	3/8	1-1/2
500-0000435	0.0435		3/8	1-1/2
500-0000440	0.0440		3/8	1-1/2
500-0000445	0.0445		3/8	1-1/2
500-0000450	0.0450		3/8	1-1/2
500-0000455	0.0455		3/8	1-1/2
500-0000460	0.0460		3/8	1-1/2
500-003056	0.0465	56	3/8	1-1/2
500-001003	0.0469	3/64	3/8	1-1/2
500-0000470	0.0470		3/8	1-1/2
500-0000475	0.0475		3/8	1-1/2
500-0000480	0.0480		3/8	1-1/2
500-0000485	0.0485		3/8	1-1/2
500-0000490	0.0490		3/8	1-1/2
500-0000495	0.0495		3/8	1-1/2
500-0000500	0.0500		3/8	1-1/2
500-0000505	0.0505		3/8	1-1/2
500-0000510	0.0510		3/8	1-1/2
500-0000515	0.0515		3/8	1-1/2
500-003055	0.0520	55	3/8	1-1/2
500-0000525	0.0525		3/8	1-1/2
500-0000530	0.0530		3/8	1-1/2
500-0000535	0.0535		3/8	1-1/2
500-0000540	0.0540		3/8	1-1/2
500-0000545	0.0545		3/8	1-1/2
500-003054	0.0550	54	3/8	1-1/2
500-0000555	0.0555		3/8	1-1/2
500-0000560	0.0560		3/8	1-1/2
500-0000565	0.0565		3/8	1-1/2
500-0000570	0.0570		3/8	1-1/2
500-0000575	0.0575		3/8	1-1/2
500-0000580	0.0580		3/8	1-1/2
500-0000585	0.0585		3/8	1-1/2
500-0000590	0.0590		3/8	1-1/2
500-004001.5	0.0591	1.5 mm	3/8	1-1/2



MONSTER ITEM #	DEC. INCHES	SIZE	L.O.C.	O.A.L.
500-003053	0.0595	53	3/8	1-1/2
500-0000600	0.0600		3/8	1-1/2
500-0000605	0.0605		3/8	1-1/2
500-0000610	0.0610		3/8	1-1/2
500-0000615	0.0615		3/8	1-1/2
500-0000620	0.0620		3/8	1-1/2
500-001004	0.0625	1/16	3/8	1-1/2
500-0000630	0.0630		3/8	1-1/2
500-003052	0.0635	52	3/8	1-1/2
500-0000640	0.0640		3/8	1-1/2
500-0000645	0.0645		3/8	1-1/2
500-0000650	0.0650		3/8	1-1/2
500-0000655	0.0655		1/2	1-3/4
500-0000660	0.0660		1/2	1-3/4
500-0000665	0.0665		1/2	1-3/4
500-003051	0.0670	51	1/2	1-3/4
500-0000675	0.0675		1/2	1-3/4
500-0000680	0.0680		1/2	1-3/4
500-0000685	0.0685		1/2	1-3/4
500-0000690	0.0690		1/2	1-3/4
500-0000695	0.0695		1/2	1-3/4
500-003050	0.0700	50	1/2	1-3/4
500-0000705	0.0705		1/2	1-3/4
500-0000710	0.0710		1/2	1-3/4
500-0000715	0.0715		1/2	1-3/4
500-0000720	0.0720		1/2	1-3/4
500-0000725	0.0725		1/2	1-3/4
500-003049	0.0730	49	1/2	1-3/4
500-0000735	0.0735		1/2	1-3/4
500-0000740	0.0740		1/2	1-3/4
500-0000745	0.0745		1/2	1-3/4
500-0000750	0.0750		1/2	1-3/4
500-0000755	0.0755		1/2	1-3/4
500-003048	0.0760	48	1/2	1-3/4
500-0000765	0.0765		1/2	1-3/4
500-0000770	0.0770		1/2	1-3/4
500-0000775	0.0775		1/2	1-3/4
500-0000780	0.0780		1/2	1-3/4
500-001005	0.0781	5/64	1/2	1-3/4
500-003047	0.0785	47	1/2	1-3/4
500-004002	0.0787	2.0 mm	1/2	1-3/4
500-0000790	0.0790		1/2	1-3/4
500-0000795	0.0795		1/2	1-3/4
500-0000800	0.0800		1/2	1-3/4
500-0000805	0.0805		1/2	1-3/4
500-003046	0.0810	46	1/2	1-3/4
500-0000815	0.0815		1/2	2
500-003045	0.0820	45	1/2	2
500-0000825	0.0825		1/2	2
500-0000830	0.0830		1/2	2
500-0000835	0.0835		1/2	2
500-0000840	0.0840		1/2	2
500-0000845	0.0845		1/2	2
500-0000850	0.0850		1/2	2
500-0000855	0.0855		1/2	2
500-003044	0.0860	44	1/2	2
500-0000865	0.0865		1/2	2
500-0000870	0.0870		1/2	2
500-0000875	0.0875		1/2	2
500-0000880	0.0880		1/2	2
500-0000885	0.0885		1/2	2
500-003043	0.0890	43	1/2	2
500-0000895	0.0895		1/2	2
500-0000900	0.0900		1/2	2

Solid Carbide Chucking Reamers



MONSTER ITEM #	DEC. INCHES	SIZE	L.O.C.	O.A.L.
500-0000905	0.0905		1/2	2
500-0000910	0.0910		1/2	2
500-0000915	0.0915		1/2	2
500-0000920	0.0920		1/2	2
500-0000925	0.0925		1/2	2
500-0000930	0.0930		1/2	2
500-003042	0.0935	42	1/2	2
500-001006	0.0938	3/32	1/2	2
500-0000940	0.0940		1/2	2
500-0000945	0.0945		1/2	2
500-0000950	0.0950		1/2	2
500-0000955	0.0955		1/2	2
500-003041	0.0960	41	1/2	2
500-0000965	0.0965		1/2	2
500-0000970	0.0970		5/8	2-1/4
500-0000975	0.0975		5/8	2-1/4
500-003040	0.0980	40	5/8	2-1/4
500-004002.5	0.0984	2.5 mm	5/8	2-1/4
500-0000985	0.0985		5/8	2-1/4
500-0000990	0.0990		5/8	2-1/4
500-003039	0.0995	39	5/8	2-1/4
500-0001000	0.1000		5/8	2-1/4
500-0001005	0.1005		5/8	2-1/4
500-0001010	0.1010		5/8	2-1/4
500-003038	0.1015	38	5/8	2-1/4
500-0001020	0.1020		5/8	2-1/4
500-0001025	0.1025		5/8	2-1/4
500-0001030	0.1030		5/8	2-1/4
500-0001035	0.1035		5/8	2-1/4
500-003037	0.1040	37	5/8	2-1/4
500-0001045	0.1045		5/8	2-1/4
500-0001050	0.1050		5/8	2-1/4
500-0001055	0.1055		5/8	2-1/4
500-0001060	0.1060		5/8	2-1/4
500-003036	0.1065	36	5/8	2-1/4
500-0001070	0.1070		5/8	2-1/4
500-0001075	0.1075		5/8	2-1/4
500-0001080	0.1080		5/8	2-1/4
500-0001085	0.1085		5/8	2-1/4
500-0001090	0.1090		5/8	2-1/4
500-001007	0.1094	7/64	5/8	2-1/4
500-0001095	0.1095		5/8	2-1/4
500-003035	0.1100	35	5/8	2-1/4
500-0001105	0.1105		5/8	2-1/4
500-003034	0.1110	34	5/8	2-1/4
500-0001115	0.1115		5/8	2-1/4
500-0001120	0.1120		5/8	2-1/4
500-0001125	0.1125		5/8	2-1/4
500-003033	0.1130	33	5/8	2-1/4
500-0001135	0.1135		5/8	2-1/4
500-0001140	0.1140		5/8	2-1/4
500-0001145	0.1145		5/8	2-1/4
500-0001150	0.1150		5/8	2-1/4
500-0001155	0.1155		5/8	2-1/4
500-003032	0.1160	32	5/8	2-1/4
500-0001165	0.1165		5/8	2-1/4
500-0001170	0.1170		5/8	2-1/4
500-0001175	0.1175		5/8	2-1/4
500-0001180	0.1180		5/8	2-1/4
500-004003	0.1181	3.0 mm	5/8	2-1/4
500-0001185	0.1185		5/8	2-1/4
500-0001190	0.1190		5/8	2-1/4
500-0001195	0.1195		5/8	2-1/4
500-003031	0.1200	31	5/8	2-1/4

MONSTER ITEM #	DEC. INCHES	SIZE	L.O.C.	O.A.L.
500-0001205	0.1205		5/8	2-1/4
500-0001210	0.1210		5/8	2-1/4
500-0001215	0.1215		5/8	2-1/4
500-0001220	0.1220		5/8	2-1/4
500-0001225	0.1225		5/8	2-1/4
500-0001230	0.1230	D/P	5/8	2-1/4
500-0001235	0.1235		5/8	2-1/4
500-0001240	0.1240	U/S	5/8	2-1/4
500-0001245	0.1245		5/8	2-1/4
500-0001247	0.1247	D/P	5/8	2-1/4
500-001008	0.1250	1/8	5/8	2-1/4
500-0001255	0.1255		5/8	2-1/4
500-0001260	0.1260	O/S	5/8	2-1/4
500-0001265	0.1265		5/8	2-1/4
500-0001270	0.1270		5/8	2-1/4
500-0001275	0.1275		5/8	2-1/4
500-0001280	0.1280		5/8	2-1/4
500-003030	0.1285	30	5/8	2-1/4
500-0001290	0.1290		5/8	2-1/4
500-0001295	0.1295		5/8	2-1/4
500-0001300	0.1300		5/8	2-1/4
500-0001305	0.1305		3/4	2-1/2
500-0001310	0.1310		3/4	2-1/2
500-0001315	0.1315		3/4	2-1/2
500-0001320	0.1320		3/4	2-1/2
500-0001325	0.1325		3/4	2-1/2
500-0001330	0.1330		3/4	2-1/2
500-0001335	0.1335		3/4	2-1/2
500-0001340	0.1340		3/4	2-1/2
500-0001345	0.1345		3/4	2-1/2
500-0001350	0.1350		3/4	2-1/2
500-0001355	0.1355		3/4	2-1/2
500-003029	0.1360	29	3/4	2-1/2
500-0001365	0.1365		3/4	2-1/2
500-0001370	0.1370		3/4	2-1/2
500-0001375	0.1375		3/4	2-1/2
500-004003.5	0.1378	3.5 mm	3/4	2-1/2
500-0001380	0.1380		3/4	2-1/2
500-0001385	0.1385		3/4	2-1/2
500-0001390	0.1390		3/4	2-1/2
500-0001395	0.1395		3/4	2-1/2
500-0001400	0.1400		3/4	2-1/2
500-003028	0.1405	28	3/4	2-1/2
500-001009	0.1406	9/64	3/4	2-1/2
500-0001410	0.1410		3/4	2-1/2
500-0001415	0.1415		3/4	2-1/2
500-0001420	0.1420		3/4	2-1/2
500-0001425	0.1425		3/4	2-1/2
500-0001430	0.1430		3/4	2-1/2
500-0001435	0.1435		3/4	2-1/2
500-003027	0.1440	27	3/4	2-1/2
500-0001445	0.1445		3/4	2-1/2
500-0001450	0.1450		3/4	2-1/2
500-0001455	0.1455		3/4	2-1/2
500-0001460	0.1460		3/4	2-1/2
500-0001465	0.1465		3/4	2-1/2
500-003026	0.1470	26	3/4	2-1/2
500-0001475	0.1475		3/4	2-1/2
500-0001480	0.1480		3/4	2-1/2
500-0001485	0.1485		3/4	2-1/2
500-0001490	0.1490		3/4	2-1/2
500-003025	0.1495	25	3/4	2-1/2
500-0001500	0.1500		3/4	2-1/2
500-0001505	0.1505		3/4	2-1/2





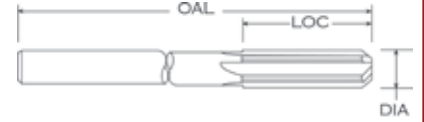
Premium Sub-Micron C-2 Carbide with 10% Cobalt

REAM MONSTER®

4 Flutes on Reamers to .2550 Dia.

6 Flutes on all other Sizes

Diameter	Tolerances
.0280 to .2500	+.0000/+.0002
.2501 to .5000	+.0000/+.0003



MONSTER ITEM #	DEC. INCHES	SIZE	L.O.C.	O.A.L.
500-0001507	0.1507		3/4	2-1/2
500-0001510	0.1510		3/4	2-1/2
500-0001515	0.1515		3/4	2-1/2
500-003024	0.1520	24	3/4	2-1/2
500-0001525	0.1525		3/4	2-1/2
500-0001530	0.1530		3/4	2-1/2
500-0001535	0.1535		3/4	2-1/2
500-003023	0.1540	23	3/4	2-1/2
500-0001541	0.1541		3/4	2-1/2
500-0001545	0.1545		3/4	2-1/2
500-0001550	0.1550		3/4	2-1/2
500-0001555	0.1555		3/4	2-1/2
500-0001560	0.1560		3/4	2-1/2
500-001010	0.1562	5/32	3/4	2-1/2
500-0001565	0.1565		3/4	2-1/2
500-003022	0.1570	22	3/4	2-1/2
500-004004	0.1575	4.0 mm	3/4	2-1/2
500-0001580	0.1580		3/4	2-1/2
500-0001585	0.1585		3/4	2-1/2
500-003021	0.1590	21	3/4	2-1/2
500-0001595	0.1595		3/4	2-1/2
500-0001600	0.1600		3/4	2-1/2
500-0001605	0.1605		3/4	2-1/2
500-003020	0.1610	20	7/8	2-3/4
500-0001615	0.1615		7/8	2-3/4
500-0001620	0.1620		7/8	2-3/4
500-0001625	0.1625		7/8	2-3/4
500-0001630	0.1630		7/8	2-3/4
500-0001635	0.1635		7/8	2-3/4
500-0001640	0.1640		7/8	2-3/4
500-0001645	0.1645		7/8	2-3/4
500-0001650	0.1650		7/8	2-3/4
500-0001655	0.1655		7/8	2-3/4
500-003019	0.1660	19	7/8	2-3/4
500-0001665	0.1665		7/8	2-3/4
500-0001670	0.1670		7/8	2-3/4
500-0001675	0.1675		7/8	2-3/4
500-0001680	0.1680		7/8	2-3/4
500-0001685	0.1685		7/8	2-3/4
500-0001690	0.1690		7/8	2-3/4
500-003018	0.1695	18	7/8	2-3/4
500-0001700	0.1700		7/8	2-3/4
500-0001705	0.1705		7/8	2-3/4
500-0001710	0.1710		7/8	2-3/4
500-0001715	0.1715		7/8	2-3/4
500-001011	0.1719	11/64	7/8	2-3/4
500-0001720	0.1720		7/8	2-3/4
500-0001725	0.1725		7/8	2-3/4
500-003017	0.1730	17	7/8	2-3/4
500-0001735	0.1735		7/8	2-3/4
500-0001740	0.1740		7/8	2-3/4
500-0001745	0.1745		7/8	2-3/4
500-0001750	0.1750		7/8	2-3/4
500-0001755	0.1755		7/8	2-3/4
500-0001760	0.1760		7/8	2-3/4
500-0001765	0.1765		7/8	2-3/4
500-003016	0.1770	16	7/8	2-3/4
500-004004.5	0.1772	4.5 mm	7/8	2-3/4
500-0001775	0.1775		7/8	2-3/4
500-0001780	0.1780		7/8	2-3/4
500-0001785	0.1785		7/8	2-3/4
500-0001790	0.1790		7/8	2-3/4
500-0001795	0.1795		7/8	2-3/4
500-003015	0.1800	15	7/8	2-3/4

MONSTER ITEM #	DEC. INCHES	SIZE	L.O.C.	O.A.L.
500-0001805	0.1805		7/8	2-3/4
500-0001810	0.1810		7/8	2-3/4
500-0001814	0.1814		7/8	2-3/4
500-0001815	0.1815		7/8	2-3/4
500-003014	0.1820	14	7/8	2-3/4
500-0001825	0.1825		7/8	2-3/4
500-0001830	0.1830		7/8	2-3/4
500-0001835	0.1835		7/8	2-3/4
500-0001840	0.1840		7/8	2-3/4
500-0001845	0.1845		7/8	2-3/4
500-003013	0.1850	13	7/8	2-3/4
500-0001855	0.1855	D/P	7/8	2-3/4
500-0001860	0.1860		7/8	2-3/4
500-0001865	0.1865	U/S	7/8	2-3/4
500-0001870	0.1870	D/P	7/8	2-3/4
500-0001872	0.1872		7/8	2-3/4
500-001012	0.1875	3/16	7/8	2-3/4
500-0001880	0.1880		7/8	2-3/4
500-0001885	0.1885	O/S	7/8	2-3/4
500-003012	0.1890	12	7/8	2-3/4
500-0001895	0.1895		7/8	2-3/4
500-0001900	0.1900		7/8	2-3/4
500-0001905	0.1905		7/8	2-3/4
500-003011	0.1910	11	7/8	2-3/4
500-0001915	0.1915		7/8	2-3/4
500-0001920	0.1920		1	3
500-0001925	0.1925		1	3
500-0001930	0.1930		1	3
500-003010	0.1935	10	1	3
500-0001940	0.1940		1	3
500-0001945	0.1945		1	3
500-0001950	0.1950		1	3
500-0001955	0.1955		1	3
500-003009	0.1960	9	1	3
500-0001965	0.1965		1	3
500-004005	0.1969	5.0 mm	1	3
500-0001970	0.1970		1	3
500-0001975	0.1975		1	3
500-0001980	0.1980		1	3
500-0001985	0.1985		1	3
500-003008	0.1990	8	1	3
500-0001995	0.1995		1	3
500-0002000	0.2000		1	3
500-0002005	0.2005		1	3
500-003007	0.2010	7	1	3
500-0002015	0.2015		1	3
500-0002020	0.2020		1	3
500-0002025	0.2025		1	3
500-0002030	0.2030		1	3
500-001013	0.2031	13/64	1	3
500-0002035	0.2035		1	3
500-003006	0.2040	6	1	3
500-0002045	0.2045		1	3
500-0002050	0.2050		1	3
500-003005	0.2055	5	1	3
500-0002060	0.2060		1	3
500-0002065	0.2065		1	3
500-0002070	0.2070		1	3
500-0002075	0.2075		1	3
500-0002080	0.2080		1	3
500-0002085	0.2085		1	3
500-003004	0.2090	4	1	3
500-0002095	0.2095		1	3
500-0002100	0.2100		1	3



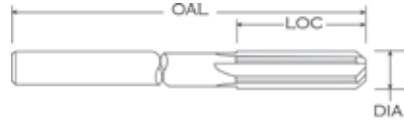
Premium Sub-Micron C-2 Carbide with 10% Cobalt

REAM MONSTER®

4 Flutes on Reamers to .2550 Dia.

6 Flutes on all other Sizes

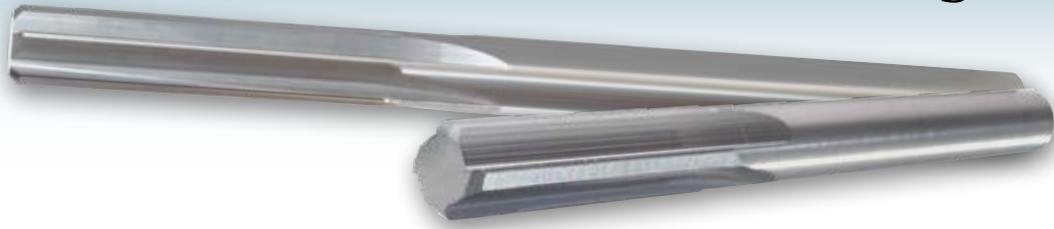
Diameter	Tolerances
.0280 to .2500	+ .0000/+ .0002
.2501 to .5000	+ .0000/+ .0003



MONSTER ITEM #	DEC. INCHES	SIZE	L.O.C.	O.A.L.
500-0002105	0.2105		1	3
500-0002110	0.2110		1	3
500-0002115	0.2115		1	3
500-0002120	0.2120		1	3
500-0002125	0.2125		1	3
500-003003	0.2130	3	1	3
500-0002135	0.2135		1	3
500-0002140	0.2140		1	3
500-0002145	0.2145		1	3
500-0002150	0.2150		1	3
500-0002155	0.2155		1	3
500-0002160	0.2160		1	3
500-004005.5	0.2165	5.5 mm	1	3
500-0002170	0.2170		1	3
500-0002175	0.2175		1	3
500-0002177	0.2177		1	3
500-0002180	0.2180		1	3
500-0002185	0.2185		1	3
500-001014	0.2188	7/32	1	3
500-0002190	0.2190		1	3
500-0002195	0.2195		1	3
500-0002200	0.2200		1	3
500-0002205	0.2205		1	3
500-003002	0.2210	2	1	3
500-0002215	0.2215		1	3
500-0002220	0.2220		1	3
500-0002225	0.2225		1	3
500-0002230	0.2230		1	3
500-0002235	0.2235		1	3
500-0002240	0.2240		1	3
500-0002245	0.2245		1	3
500-0002250	0.2250		1	3
500-0002255	0.2255		1	3
500-0002260	0.2260		1	3
500-0002265	0.2265		1	3
500-0002270	0.2270		1	3
500-0002275	0.2275		1	3
500-003001	0.2280	1	1	3
500-0002285	0.2285		1	3
500-0002290	0.2290		1	3
500-0002295	0.2295		1	3
500-0002300	0.2300		1	3
500-0002305	0.2305		1	3
500-0002310	0.2310		1	3
500-0002315	0.2315		1	3
500-0002320	0.2320		1	3
500-0002325	0.2325		1	3
500-0002330	0.2330		1	3
500-0002335	0.2335		1	3
500-002000	0.2340	A	1	3
500-001015	0.2344	15/64	1	3
500-0002345	0.2345		1	3
500-0002350	0.2350		1	3
500-0002355	0.2355		1	3
500-0002360	0.2360		1	3
500-004006	0.2362	6.0 mm	1	3
500-0002365	0.2365		1	3
500-0002370	0.2370		1	3
500-0002375	0.2375		1	3
500-002001	0.2380	B	1	3
500-0002385	0.2385		1	3
500-0002390	0.2390		1	3
500-0002395	0.2395		1	3
500-0002400	0.2400		1	3

MONSTER ITEM #	DEC. INCHES	SIZE	L.O.C.	O.A.L.
500-0002405	0.2405		1	3
500-0002410	0.2410		1	3
500-0002415	0.2415		1	3
500-002002	0.2420	C	1	3
500-0002425	0.2425		1	3
500-0002430	0.2430		1	3
500-0002435	0.2435		1	3
500-0002440	0.2440		1	3
500-0002445	0.2445		1	3
500-0002450	0.2450		1	3
500-0002455	0.2455		1	3
500-002003	0.2460	D	1	3
500-0002465	0.2465		1	3
500-0002470	0.2470		1	3
500-0002475	0.2475		1	3
500-0002480	0.2480	D/P	1	3
500-0002485	0.2485		1	3
500-0002490	0.2490	U/S	1	3
500-0002495	0.2495	D/P	1	3
500-001016	0.2500	1/4	1	3
500-0002505	0.2505		1	3
500-0002510	0.2510	O/S	1	3
500-0002515	0.2515		1	3
500-0002520	0.2520		1	3
500-0002525	0.2525		1	3
500-0002530	0.2530		1	3
500-0002535	0.2535		1	3
500-0002540	0.2540		1	3
500-0002545	0.2545		1	3
500-0002550	0.2550		1	3
500-004006.5	0.2559	6.5 mm	1-1/8	3-1/4
500-0002560	0.2560		1-1/8	3-1/4
500-0002565	0.2565		1-1/8	3-1/4
500-002005	0.2570	F	1-1/8	3-1/4
500-0002575	0.2575		1-1/8	3-1/4
500-0002580	0.2580		1-1/8	3-1/4
500-0002590	0.2590		1-1/8	3-1/4
500-0002600	0.2600		1-1/8	3-1/4
500-002006	0.2610	G	1-1/8	3-1/4
500-0002620	0.2620		1-1/8	3-1/4
500-0002630	0.2630		1-1/8	3-1/4
500-0002635	0.2635		1-1/8	3-1/4
500-0002640	0.2640		1-1/8	3-1/4
500-0002650	0.2650		1-1/8	3-1/4
500-001017	0.2656	17/64	1-1/8	3-1/4
500-002007	0.2660	H	1-1/8	3-1/4
500-0002670	0.2670		1-1/8	3-1/4
500-0002680	0.2680		1-1/8	3-1/4
500-0002690	0.2690		1-1/8	3-1/4
500-0002700	0.2700		1-1/8	3-1/4
500-0002710	0.2710		1-1/8	3-1/4
500-002008	0.2720	I	1-1/8	3-1/4
500-0002730	0.2730		1-1/8	3-1/4
500-0002740	0.2740		1-1/8	3-1/4
500-0002750	0.2750		1-1/8	3-1/4
500-004007	0.2756	7.0 mm	1-1/8	3-1/4
500-0002760	0.2760		1-1/8	3-1/4
500-002009	0.2770	J	1-1/8	3-1/4
500-0002780	0.2780		1-1/8	3-1/4
500-0002790	0.2790		1-1/8	3-1/4
500-0002800	0.2800		1-1/8	3-1/4
500-002010	0.2810	K	1-1/8	3-1/4
500-001018	0.2812	9/32	1-1/8	3-1/4
500-0002818	0.2818		1-1/8	3-1/4

Solid Carbide Chucking Reamers



MONSTER ITEM #	DEC. INCHES	SIZE	L.O.C.	O.A.L.
500-0002820	0.2820		1-1/8	3-1/4
500-0002830	0.2830		1-1/8	3-1/4
500-0002840	0.2840		1-1/8	3-1/4
500-0002850	0.2850		1-1/8	3-1/4
500-0002860	0.2860		1-1/8	3-1/4
500-0002870	0.2870		1-1/8	3-1/4
500-0002880	0.2880		1-1/8	3-1/4
500-0002890	0.2890		1-1/8	3-1/4
500-002011	0.2900	L	1-1/8	3-1/4
500-0002910	0.2910		1-1/8	3-1/4
500-0002920	0.2920		1-1/8	3-1/4
500-0002930	0.2930		1-1/8	3-1/4
500-0002940	0.2940		1-1/8	3-1/4
500-002012	0.2950	M	1-1/8	3-1/4
500-004007.5	0.2953	7.5 mm	1-1/8	3-1/4
500-0002960	0.2960		1-1/8	3-1/4
500-001019	0.2969	19/64	1-1/8	3-1/4
500-0002970	0.2970		1-1/8	3-1/4
500-0002980	0.2980		1-1/8	3-1/4
500-0002990	0.2990		1-1/8	3-1/4
500-0003000	0.3000		1-1/8	3-1/4
500-0003010	0.3010		1-1/8	3-1/4
500-002013	0.3020	N	1-1/8	3-1/4
500-0003030	0.3030		1-1/8	3-1/4
500-0003040	0.3040		1-1/8	3-1/4
500-0003050	0.3050		1-1/8	3-1/4
500-0003060	0.3060		1-1/8	3-1/4
500-0003070	0.3070		1-1/8	3-1/4
500-0003080	0.3080		1-1/8	3-1/4
500-0003090	0.3090		1-1/8	3-1/4
500-0003100	0.3100		1-1/8	3-1/4
500-0003105	0.3105	D/P	1-1/8	3-1/4
500-0003110	0.3110		1-1/8	3-1/4
500-0003115	0.3115	U/S	1-1/8	3-1/4
500-0003120	0.3120	D/P	1-1/8	3-1/4
500-001020	0.3125	5/16	1-1/8	3-1/4
500-0003130	0.3130		1-1/8	3-1/4
500-0003135	0.3135	O/S	1-1/8	3-1/4
500-0003140	0.3140		1-1/8	3-1/4
500-004008	0.3150	8.0 mm	1-1/8	3-1/4
500-002014	0.3160	O	1-1/8	3-1/4
500-0003170	0.3170		1-1/4	3-1/2
500-0003180	0.3180		1-1/4	3-1/2
500-0003190	0.3190		1-1/4	3-1/2
500-0003200	0.3200		1-1/4	3-1/2
500-0003210	0.3210		1-1/4	3-1/2
500-0003220	0.3220		1-1/4	3-1/2
500-002015	0.3230	P	1-1/4	3-1/2
500-0003240	0.3240		1-1/4	3-1/2
500-0003250	0.3250		1-1/4	3-1/2
500-0003260	0.3260		1-1/4	3-1/2
500-0003270	0.3270		1-1/4	3-1/2
500-0003280	0.3280		1-1/4	3-1/2
500-001021	0.3281	21/64	1-1/4	3-1/2
500-0003290	0.3290		1-1/4	3-1/2
500-0003300	0.3300		1-1/4	3-1/2
500-0003310	0.3310		1-1/4	3-1/2
500-002016	0.3320	Q	1-1/4	3-1/2
500-0003330	0.3330		1-1/4	3-1/2
500-0003340	0.3340		1-1/4	3-1/2
500-004008.5	0.3346	8.5 mm	1-1/4	3-1/2
500-0003350	0.3350		1-1/4	3-1/2
500-0003360	0.3360		1-1/4	3-1/2
500-0003370	0.3370		1-1/4	3-1/2

MONSTER ITEM #	DEC. INCHES	SIZE	L.O.C.	O.A.L.
500-0003380	0.3380		1-1/4	3-1/2
500-002017	0.3390	R	1-1/4	3-1/2
500-0003400	0.3400		1-1/4	3-1/2
500-0003410	0.3410		1-1/4	3-1/2
500-0003420	0.3420		1-1/4	3-1/2
500-0003430	0.3430		1-1/4	3-1/2
500-001022	0.3438	11/32	1-1/4	3-1/2
500-0003440	0.3440		1-1/4	3-1/2
500-0003450	0.3450		1-1/4	3-1/2
500-0003460	0.3460		1-1/4	3-1/2
500-0003470	0.3470		1-1/4	3-1/2
500-002018	0.3480	S	1-1/4	3-1/2
500-0003490	0.3490		1-1/4	3-1/2
500-0003500	0.3500		1-1/4	3-1/2
500-0003510	0.3510		1-1/4	3-1/2
500-0003520	0.3520		1-1/4	3-1/2
500-0003530	0.3530		1-1/4	3-1/2
500-0003540	0.3540		1-1/4	3-1/2
500-004009	0.3543	9.0 mm	1-1/4	3-1/2
500-0003550	0.3550		1-1/4	3-1/2
500-0003560	0.3560		1-1/4	3-1/2
500-0003570	0.3570		1-1/4	3-1/2
500-002019	0.3580	T	1-1/4	3-1/2
500-0003590	0.3590		1-1/4	3-1/2
500-001023	0.3594	23/64	1-1/4	3-1/2
500-0003600	0.3600		1-1/4	3-1/2
500-0003610	0.3610		1-1/4	3-1/2
500-0003620	0.3620		1-1/4	3-1/2
500-0003630	0.3630		1-1/4	3-1/2
500-0003640	0.3640		1-1/4	3-1/2
500-0003650	0.3650		1-1/4	3-1/2
500-0003660	0.3660		1-1/4	3-1/2
500-0003670	0.3670		1-1/4	3-1/2
500-002020	0.3680	U	1-1/4	3-1/2
500-0003690	0.3690		1-1/4	3-1/2
500-0003700	0.3700		1-1/4	3-1/2
500-0003710	0.3710		1-1/4	3-1/2
500-0003720	0.3720		1-1/4	3-1/2
500-0003730	0.3730	D/P	1-1/4	3-1/2
500-004009.5	0.3740	9.5 mm	1-1/4	3-1/2
500-0003745	0.3745	D/P	1-1/4	3-1/2
500-001024	0.3750	3/8	1-1/4	3-1/2
500-0003755	0.3755		1-1/4	3-1/2
500-0003760	0.3760	O/S	1-1/4	3-1/2
500-0003765	0.3765		1-1/4	3-1/2
500-002021	0.3770	V	1-1/4	3-1/2
500-0003780	0.3780		1-1/4	3-1/2
500-0003790	0.3790		1-1/4	3-1/2
500-0003800	0.3800		1-1/4	3-1/2
500-0003810	0.3810		1-1/4	3-1/2
500-0003820	0.3820		1-1/4	3-1/2
500-0003830	0.3830		1-1/4	3-1/2
500-0003840	0.3840		1-1/4	3-1/2
500-0003850	0.3850		1-1/4	3-1/2
500-002022	0.3860	W	1-1/4	3-1/2
500-0003870	0.3870		1-1/4	3-1/2
500-0003880	0.3880		1-1/4	3-1/2
500-0003890	0.3890		1-1/4	3-1/2
500-0003900	0.3900		1-1/4	3-1/2
500-001025	0.3906	25/64	1-1/4	3-1/2
500-0003910	0.3910		1-1/4	3-1/2
500-0003920	0.3920		1-1/4	3-1/2
500-0003930	0.3930		1-1/4	3-1/2
500-004010	0.3937	10.0 mm	1-1/4	3-1/2



SPEEDS AND FEEDS

NOTE: All recommendations are considered as starting parameters only

Material: STEELS

SIZE		Mild Steels Carbon Steels		<30 Rc		30-38 Rc		38-45 Rc	
in	mm	RPM	in/rev	RPM	in/rev	RPM	in/rev	RPM	in/rev
		215 SFM		175 SFM		145 SFM		110 SFM	
1/32	0.8	26300	0.0010	21410	0.0010	17740	0.0010	13460	0.0008
	1	20830	0.0012	16950	0.0012	14050	0.0012	10660	0.0010
1/16	1.5	13130	0.0018	10690	0.0018	8850	0.0018	6720	0.0015
3/32		8750	0.0030	7120	0.0030	5900	0.0030	4480	0.0025
1/8	3	6560	0.0029	5340	0.0029	4430	0.0029	3360	0.0023
5/32	4	5250	0.0040	4280	0.0040	3540	0.0040	2690	0.0032
3/16		4380	0.0050	3560	0.0050	2950	0.0050	2240	0.0040
7/32		3750	0.0062	3050	0.0058	2530	0.0058	1920	0.0049
1/4	6	3280	0.0066	2670	0.0062	2210	0.0062	1680	0.0053
9/32		2920	0.0075	2380	0.0070	1970	0.0070	1490	0.0060
5/16	8	2630	0.0075	2140	0.0070	1770	0.0070	1340	0.0060
11/32		2390	0.0084	1940	0.0068	1610	0.0068	1220	0.0065
3/8		2190	0.0092	1780	0.0076	1480	0.0076	1120	0.0071
13/32	10	2020	0.0101	1640	0.0083	1360	0.0083	1030	0.0078
7/16		1880	0.0110	1530	0.0090	1260	0.0090	960	0.0085
1/2	12	1640	0.0130	1340	0.0112	1110	0.0112	840	0.0102

Consider the following variables when trying to optimize performance:

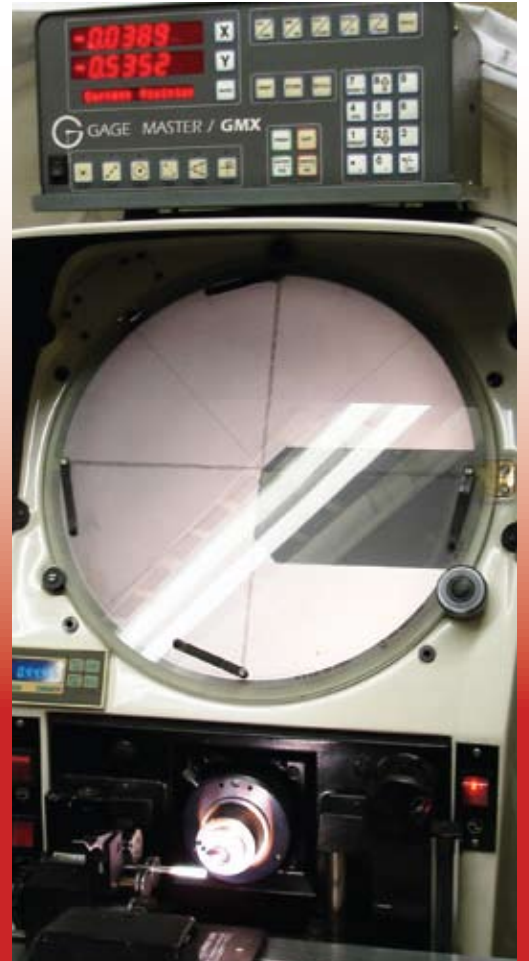
1. Machine rigidity
2. Concentricity at spindle
3. Work piece rigidity
4. Use minimum tool O.A.L. for application
5. Recommended coolant type directed to point of cut
6. Match recommended feeds and speeds
7. Resharpen or replace tool before catastrophic failure



Material: OTHERS



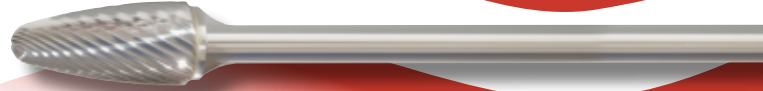
SIZE		CAST IRON		TITANIUM ALLOYS (Annealed)		INCONEL TITANIUM ALLOYS		ALUMINUM	
in	mm	RPM	in/rev	RPM	in/rev	RPM	in/rev	RPM	in/rev
		200 SFM		82 SFM		48 SFM		420 SFM	
1/32	0.8	24470	0.0008	10030	0.0010	5870	0.0008	51380	0.0008
	1	19370	0.0010	7940	0.0012	4650	0.0010	40690	0.0010
1/16	1.5	12210	0.0015	5010	0.0018	2930	0.0015	25650	0.0015
3/32		8140	0.0025	3340	0.0030	1950	0.0025	17090	0.0025
1/8	3	6110	0.0035	2500	0.0029	1470	0.0023	12820	0.0023
5/32	4	4890	0.0048	2000	0.0040	1170	0.0032	10260	0.0032
3/16		4070	0.0060	1670	0.0050	980	0.0040	8550	0.0040
7/32		3490	0.0070	1430	0.0062	840	0.0049	7330	0.0054
1/4	6	3050	0.0075	1250	0.0066	730	0.0053	6410	0.0057
9/32		2710	0.0085	1110	0.0075	650	0.0060	5700	0.0065
5/16	8	2440	0.0085	1000	0.0075	590	0.0060	5130	0.0065
11/32		2220	0.0095	910	0.0080	530	0.0065	4660	0.0068
3/8		2040	0.0105	830	0.0088	490	0.0071	4270	0.0076
13/32	10	1880	0.0115	770	0.0092	450	0.0078	3950	0.0083
7/16		1740	0.0125	720	0.0105	420	0.0085	3660	0.0090
1/2	12	1530	0.0135	630	0.0112	370	0.0093	3210	0.0112



THE MOST COMPLETE & LAST GREAT AMERICAN CARBIDE BRAND

BURR MONSTER®

Wide range of Carbide Burrs to meet your every need including extensive variety of Carbide Burr Sets



DRILL MONSTER®

Full offering of Jobber, Stub, Straight Flute, Spade and Center Drills



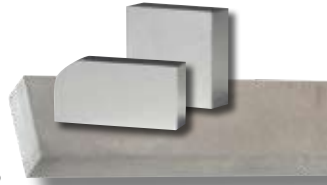
MEGA MONSTER®

High performance Carbide Endmills made from premium micrograin sinter hipped material. Roughing tools - Fast spiral endmills



METAL MONSTER®

Complete assortment of Carbide STB Strips, 1000/2000 Style Blanks, 12" Rod and random cut to length rounds



MICRO MONSTER®

Solid Carbide Miniature Endmills from .005 to .120 diameter by .001 increments to .065 diameter - 2 and 4 flute - square and ball end and by .005 increments over .065 to .120 diameter



MILL MONSTER®

Advanced tool geometry for Endmills that will outperform conventional style tools



REAM MONSTER®

World leader in Solid Carbide Reamer production. Huge inventory of fractional, decimal, wire, letter & metric sizes - with over 800 SKU's. Stock by .0005 increments to .2650 diameter and by .001 increments over .2650 to .5050 diameter



TOOL MONSTER®

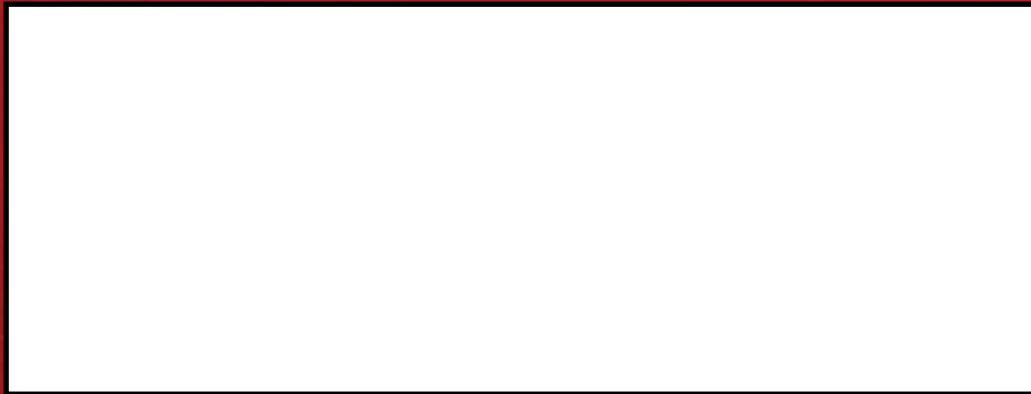
Single, Three and Six flute Chatterless Countersinks, Countersink Sets, Thread Mills, Boring Bars, Engraving Blanks and Drill Mills





REAM MONSTER®

Your Distributor



**All Monster Products
Exclusively Manufactured**

by:



Monster Tool Company
P.O. Box 1749
San Marcos, CA 92079 USA
Tel: 1-888-CARBIDE Fax: 1-888-ENDMILL
www.monstertool.com
sales@monstertool.com

